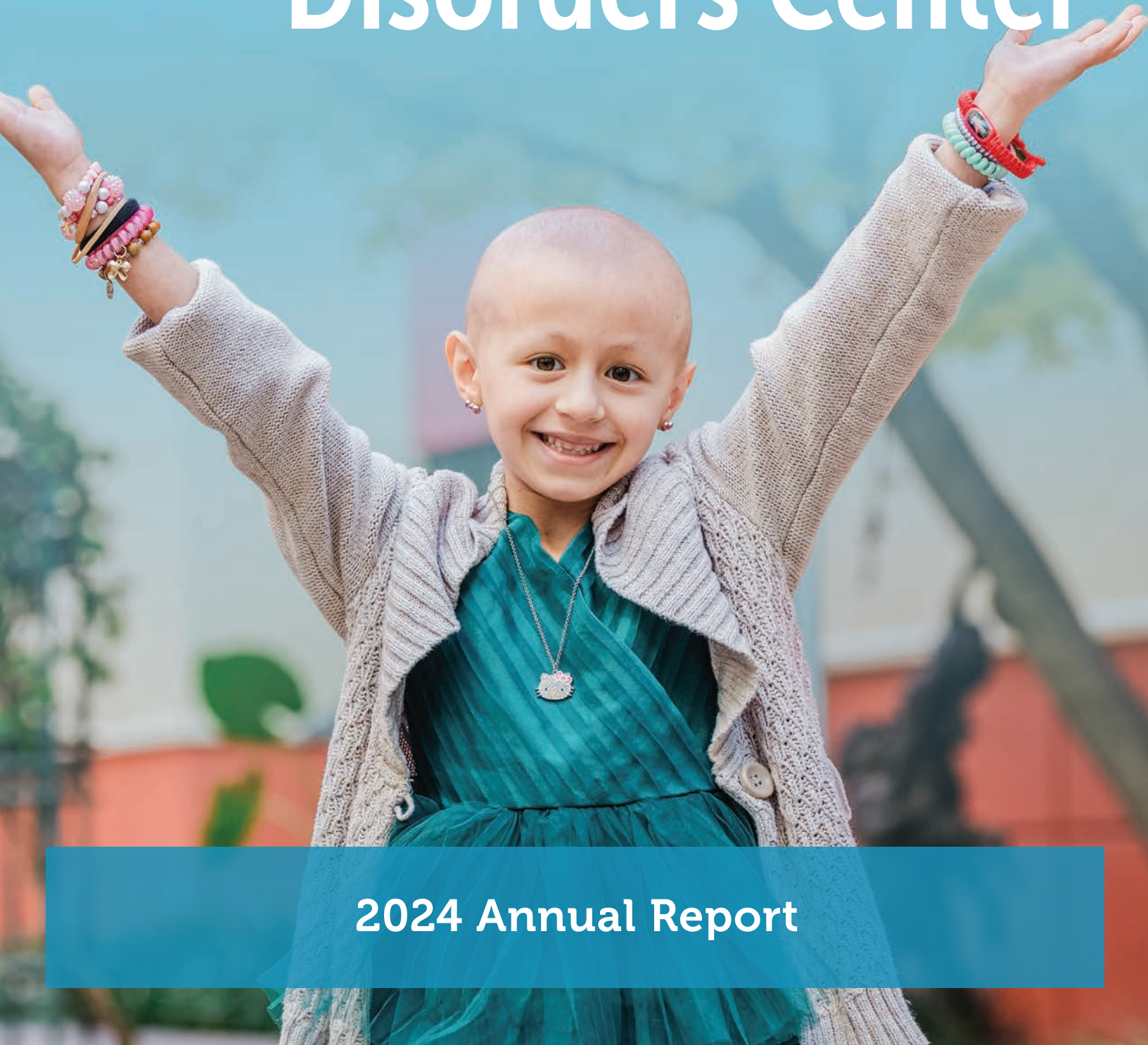




Cancer and Blood Disorders Center



2024 Annual Report



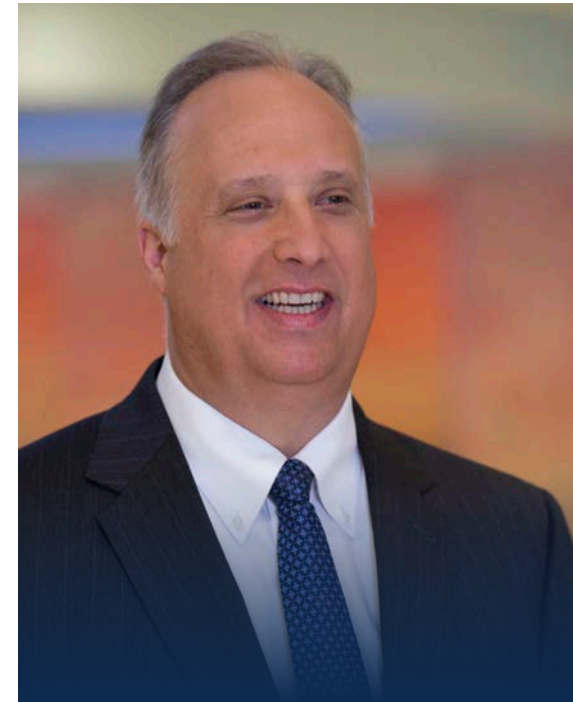
Valley Children’s Cancer and Blood Disorders Center stands as a beacon of excellence in pediatric hematology and oncology, built on a foundation of collaboration, where an expert team comes together to offer some of the best care in the country. It is through working together — sharing knowledge, new findings and a steadfast commitment to putting the patient first — that we continue to make a profound impact.

The strength of our Center lies not only in the clinical expertise we provide, but in the multidisciplinary approach we embrace. From our talented physicians and nurses to our dedicated case workers, social workers and support staff, every individual plays a crucial role in ensuring that each patient receives care that is not only of the highest quality, but also tailored to their specific needs. We recognize that caring for children goes beyond medical treatment — it involves nurturing their emotional, social and psychological well-being every step of the way.

But our work does not stop within the walls of our hospital. Effective care extends far beyond patient visits or inpatient stays, and that is why we are committed to fostering strong partnerships both locally and nationally. Through collaboration with other experts and organizations in the field, we work to ensure that children receive the comprehensive, ongoing support they need — not only during their treatment, but throughout their lives. By sharing knowledge, innovative research and community resources, we create a network of care that supports our patients from childhood through adulthood.

This annual report highlights the incredible impact of our collective efforts. It is a testament to the dedication and passion of our entire team, as well as the broader network of professionals we are fortunate to collaborate with. Together, we are advancing the field of pediatric hematology and oncology, ensuring that all patients have access to the best care, closer to home.

Vinod Balasa, MD
Valley Children’s Cancer and Blood Disorders Center Medical Director



David Christensen, MD, MHCM, FAAP, FACHE
Valley Children’s Healthcare SVP and Chief Physician Executive, Valley Children’s Medical Group President

Valley Children’s is a nationally recognized leader in pediatric care, serving 1.3 million children across California’s Central Valley. As the premier pediatric cancer treatment center on the West Coast and the sole provider of pediatric hematology and oncology services between Los Angeles and the Bay Area, we specialize in treating a wide array of conditions, ranging from common illnesses to the most complex and rare disorders.

Our dedication to providing exceptional care is strengthened through continuous collaboration — both within our organization and with esteemed national partners, as well as a comprehensive support system that expands beyond expert clinical care. This approach ensures we deliver cutting-edge treatments and therapies that significantly improve health outcomes for children, giving them the best chance to overcome serious health differences, reclaim their childhoods and feel prepared to manage their condition into adulthood.

In this report, you will explore the proactive strategies we’ve put in place to foster collaboration and adopt a multidisciplinary approach, offering hope and a path forward to a brighter future for our kids.



Rougeh Awad, RN, MSN, FNP-BC
Valley Children’s Cancer and Blood Disorders Center Director of Ambulatory Care Practice

We are proud to share the incredible and collaborative work happening at Valley Children’s Cancer and Blood Disorders Center. Our commitment to providing the best care for kids is fueled by a shared dedication to innovation, compassion and support every step of the way.

Throughout this year, we have made great strides in expanding both clinical services and educational offerings to ensure our patients and their families receive the comprehensive care and support they need before diagnosis, throughout treatment and into adulthood. We have seen remarkable growth in each of our programs, with increased participation in our childhood cancer survivorship efforts and the launch of new initiatives to engage patients in their healing journey.

Through specialized care, conferences and even scholarships, we foster healing and hope to meet the diverse needs of the kids of the Central Valley while keeping them closer to home. With our community, we are creating a lasting impact, supporting each other and the children we serve to ensure the best care possible, making a difference — one patient at a time.



Meet The Team

Physicians



Vinod Balasa
MD
Medical Director



Kanyalakshmi Ayyanar
MD



Vonda Crouse
MD



Karen Fernandez
MD



John Gates
MD



Audrey Green-Murphy
DO



J. Daniel Ozeran
MD, PhD



Latha Rao
MD



Faisal Razzaqi
MD



Sarah Sahib
MD



Bindu Sathi
MD



Wendy Tcheng
MD



Ruetima Titapiwatanakun
MD

Nurse Practitioners



Rachel Albertson
CFNP



Katie Baker
MSN, CPNP



Jill Cielnicki
DNP, FNP-C



Kelly Folmer
MSN, CPNP



Sara Jennings
DNP, FNP-C



Pam Marsh
DNP, CPNP

Practice Operations



Rougeh Awad
MSN, FNP-BC
Ambulatory Director



Ines Hodzig
BSN, RN
Practice Manager

Service in Numbers

FY2024

Patient Visits

15,660

Hematology - 6,156

Oncology - 9,504

Unique Patients

4,319

Hematology - 2,825

Oncology - 1,512

159 Newly Diagnosed
Oncology Cases

Brain / CNS	26	Lymphomas	17
Pilocytic Astrocytoma	9	Burkitt	1
Pleomorphic Xanthoastrocytoma	1	Anaplastic Large B-Cell	3
Embryonal Tumor	1	Classic Hodgkin	4
Ependymoma	2	Diffuse Large B-Cell	1
Glioma, NOS	13	Nodular Hodgkin	4
		PMBCL (Primary Mediastinal B-Cell Lymphoma)	1
Carcinoid	3	B-cell Lymphoblastic Lymphoma	2
Neuroendocrine Tumor	3	T-cell Lymphoblastic Lymphoma	1
Carcinomas	6	Neuroblastoma	6
Papillary Thyroid Carcinoma	4	NBL	5
Mucoepidermoid Carcinoma	1	Ganglioneuroma	1
Renal Cell Carcinoma	1		
		Nephroblastoma	4
Cell Tumor	12	Wilm's	4
GCT	12		
		Retinoblastoma	2
Langerhans Cell Histiocytosis (LCH)	1	Hepatoblastoma	2
Leukemia	58	Sarcomas	22
Pre B-ALL	38	Osteosarcoma	4
Pre T-ALL	5	Rhabdosarcoma	3
AML	8	Ewing's	6
APML	4	Spindle Cell	2
MPAL	1	Synovial	2
CML	2	Other	5



Access to Care

Beyond providing the best care, Valley Children's ensures timely support that patients and families can rely on. With the best systems in place, kids can receive the lifesaving intervention they need and deserve. At Valley Children's, our average access for fiscal year 2024 is as follows:

Oncology



Referral to Appointment:

16 days



Median Days to Schedule:

3 days

Hematology



Referral to Appointment:

21 days



Median Days to Schedule:

2 days





At the Heart of Excellence: Collaborating to Advance Hemophilia Care for Kids

Valley Children’s Cancer and Blood Disorders Center teamed up with the Center for Inherited Blood Disorders (CIBD) to host the Annual Conference of the Western States Regional Hemophilia Network. Blue skies and rolling green hills of the Central Valley surrounded more than 175 guests who made their way to the conference held at Tenaya Lodge near Yosemite National Park.

Throughout the weekend-long event, the conference highlighted the complexities of hemophilia and other rare bleeding disorders through collaboration, innovation and education. Its diverse and thought-provoking agenda touched on critical areas such as thrombosis, genetics, innovative therapies and emerging treatments for these life-altering conditions.

A First-Time Honor for Valley Children’s

This year marked a significant milestone for Valley Children’s, which welcomed professionals from 13 Hemostasis and Thrombosis Treatment Centers (HTCs) across California, Nevada, Hawaii and Guam. HTCs are at the forefront of providing multidisciplinary care to those with bleeding and clotting disorders, and their participation highlighted the importance of regional collaboration in advancing the field.

For Valley Children’s Medical Director Dr. Vinod Balasa, co-hosting this event was a privilege that brought together the brightest minds in the field. “Each year, the Center for Inherited Blood Disorders does an incredible job at taking a deep dive into important topics and advancements in hemophilia. To co-host this event, which is a staple for hemophilia professionals, was an incredible honor,” Dr. Balasa shared.

Attendees were able to explore the state-of-the-art facilities at Valley Children’s Cancer and Blood Disorders Center prior to the conference, gaining insight into the Center’s approach to comprehensive care for children with complex hematologic conditions. This hands-on experience proved invaluable for all involved, fostering deeper connections.

The Impact of Shared Knowledge

For all who attended, the conference was more than just a weekend of lectures and presentations; it was an invaluable opportunity to share knowledge, collaborate on pressing issues and connect with peers who are all striving to improve the lives of those affected by hemophilia. The impact of this event will be felt long after the conference has ended, as attendees brought home new insights that will shape their approach to care in the months and years ahead.

As the field of hemophilia care continues to evolve, the need for collaboration and shared learning has never been more urgent. The 2024 Annual Conference of the Western States Regional Hemophilia Network served as a reminder that, together, we can overcome the challenges faced by children with rare bleeding disorders.

“The work we do today lays the foundation for the breakthroughs of tomorrow, which is why it was with immense pride that Valley Children’s was able to play a role in advancing the standard of care for hemophilia. We are eager to continue working alongside our esteemed colleagues to ensure that all kids with bleeding disorders receive the world-class care they deserve,” added Dr. Balasa.



Dr. Balasa and the Valley Children’s team created an engaging agenda and brought in nationally recognized speakers to complement their own experts for a wonderful educational and network building conference with Yosemite as our backdrop.

Dr. Amit Soni, Western States Regional Hemophilia Network (WSRHN) Principal Investigator and Principal Investigator Center for Inherited Blood Disorders (CIBD) Principal Investigator



Teaming Up to Strengthen Sickle Cell Care

In partnership with University of California San Francisco (UCSF) Fresno, Valley Children’s held the very first Sickle Cell Summit. Sickle cell patients and families, along with various members of the community, attended the event, where providers from Valley Children’s and other Central Valley healthcare facilities shared educational topics and highlighted resources available to sickle cell patients.

“Our goal is to enhance the quality of life for our patients, and to reduce the disease burden through advanced treatments and comprehensive care strategies,” shared Dr. Bindu Sathi, Valley Children’s pediatric hematologist/oncologist and sickle cell program director. “We look forward to the continued work with our sickle cell warriors and our partners in the community to overcome the gaps in knowledge and to improve the quality of care and outcomes for sickle cell disease.”

The summit was a significant step forward in the fight against sickle cell disease, providing a platform for sharing knowledge, experiences and hope for a better future.



Valley Children's Announces the Dr. Vonda Lee Crouse Bone Marrow Transplant and Cell Therapy Program

Valley Children's received a transformational, anonymous \$15 million donation to advance the continuum of care for patients of the Cancer and Blood Disorders Center. This donation – one of the largest in our history – will establish the Dr. Vonda Lee Crouse Bone Marrow Transplant and Cell Therapy Program, allowing our extraordinary team to provide autologous bone marrow transplant (auto-BMT) and chimeric antigen receptor (CAR) T-cell therapies.

Offering the Best Care Possible, Closer to Home

With access to more than 90 treatment protocols, Valley Children's Cancer and Blood Disorders Center provides expert care for the most common to some of the rarest pediatric cancers. However, some patients with relapsed leukemia, lymphoma, brain tumors and other cancers who are candidates for life-saving cell therapy treatments have to travel out of the region to access to the care they need. In addition to making multiple trips for outpatient appointments, the treatment requires up to 100 days in a hospital far from home, placing additional emotional and financial strain on the entire family.

By making auto-BMT and cell therapy available at Valley Children's, children within our 13-county service area can receive the most advanced care possible closer to home, where they are most comfortable, lessening the financial stress for families with children like Francisco.

Meet Francisco

Francisco was diagnosed in 2011 with acute lymphoblastic leukemia (ALL) at just 3 years old. He had an astonishingly high level of white blood cells and a hemorrhage in his brain. At the time, Valley Children's did not have access to leukapheresis, which was essential to reducing his white blood cells, so he was urgently transferred 2-3 hours from his home, where he received the necessary care and started chemotherapy treatment.

Francisco then returned to Valley Children's, where he was able to complete chemotherapy closer to home, but he relapsed after two years and had to be transferred again, hours away, for a bone marrow transplant. Sadly, Francisco experienced several complications and despite overcoming them, he relapsed a third time. His only hope would be experimental medication, so Valley Children's Cancer and Blood Disorders Center provided temporary care and searched for a hospital that could save his life – that hospital was more than 2,500 miles away where Francisco received CAR-T cell therapy.

At 16 years old and under regular follow-up care at Valley Children's, Francisco has no evidence of cancer. CAR-T cell therapy saved his life.

The Dr. Vonda Lee Crouse Bone Marrow Transplant and Cell Therapy Program will be able to save kids like Francisco who have a fighting chance and without any disruption to care – right here at home.



The Meaning Behind the Name: Decades of Dedication to Cancer Care

As the founder of Central California's first pediatric oncology program, Dr. Vonda Lee Crouse has dedicated more than three decades to treating children with cancer and blood disorders. Her compassion, expertise and leadership have been a guiding light and an inspiration to those around her. As Dr. Crouse has helped the Center grow, it's only fitting this newest program is named after her.

The timeline for establishing and receiving accreditation of the new Center is approximately two to three years. The Center will have a dedicated staff, to be hired from internal and external candidates. This investment in the Dr. Vonda Lee Crouse Bone Marrow Transplant and Cell Therapy Program is another example of our community's faith and trust in Valley Children's, and in our dedication to serving our patients and families for generations to come – a commitment that will be carried on in Dr. Crouse's name.



SCAN
to learn about
Dr. Crouse's impact

Bridging Communities: Valley Children's Teams Up with UCSF Fresno to Ensure Advanced Hematology Care Into Adulthood

As children with hematologic disorders grow into young adults, their care needs to evolve. Transitioning from pediatric to adult care is a critical, yet challenging process, and it is essential that this shift is handled with preparation, support and careful coordination.

To ensure the most advanced care at every stage, Valley Children's has developed the Adult Hematology Care Transition Program in partnership with University of California San Francisco (UCSF) Fresno at their Community Cancer Institute (CCI) in Clovis. Together, patients have access to the right support at the right time through a continuum of care that allows them to maintain lifelong health without disruption.

Meeting the Need for a Seamless Transition

Transition preparation begins years in advance, starting at approximately 18 years of age to ensure that patients are fully equipped to understand their diagnosis and manage their care independently by the time they are ready to transition around 21 years of age.

Valley Children's multidisciplinary team, including social workers, providers, nurses and case managers, work collaboratively to ensure patients understand how to navigate the adult healthcare system. Social workers and case managers are particularly instrumental in the early stages of transition.

"Our social work teams work closely with patients to properly assess readiness and to ensure that they have a clear understanding of their medical diagnosis and the tools to independently manage their condition," shared Valley Children's Case Manager Marirose Larkins. "We also work directly with insurance providers to ensure that patients have the necessary preauthorizations for services – an important step that allows us to address potential challenges proactively."

Optimizing Epic Tools

Valley Children's is actively involved in a quality improvement project that integrates transition readiness into the patient's medical record. This project, which involves research, social work and nursing, provides valuable insights into how to continually enhance the transition process and measure its effectiveness.

"This tool helps us track progress and allows us to continuously accommodate the needs of the patient because each transition is unique," added Marirose. "A tailored approach is the best method for providing the utmost individualized care to ensure that no one is left behind when it comes to their health journey."



The Significance of Transitional Care for Kids

Over the last year, Valley Children's has successfully transitioned approximately 30 eligible local patients to UCSF Fresno.

"Our team works to support and help patients understand that the transition to adult care is a key part of their medical and health journey," shared UCSF Fresno Hematologist and Clinical Professor Dr. Mohammad Bukari. "The comprehensive support, systems and regular collaboration with the teams at Valley Children's has proven to be immensely effective and depicts their utmost commitment to ensuring that all patients, no matter their age, continue to receive the expert care they need to thrive."

Providers from both Valley Children's and UCSF Fresno meet monthly to ensure optimal collaboration.

"As we look ahead, we will continuously refine the Adult Hematology Care Transition Program, working tirelessly to provide the best possible care at every stage of life – because the transition to adult care shouldn't be a barrier – it should be an empowering step toward lifelong health," added Dr. Balasa.

Our Adult Hematology Care Transition Program helps adolescents and young adults smoothly transition to adult care, empowering them to manage their health while ensuring continued expert support.

Dr. Balasa, Valley Children's Cancer and Blood Disorders Medical Director

Valley Children's Solid Tumor Program: Compassionate, Expert Care Every Step of the Way

At Valley Children's, we are committed to providing expert medical care and compassionate support for patients at every stage. Our Solid Tumor Program offers comprehensive services for diagnosis and treatment of benign and malignant solid tumors, ranging from common to rare and complex conditions. When medical care alone isn't enough, our team — including nurse navigators, case managers, social workers, child life specialists and interpreter services — support families with their diverse and evolving needs.

Support for navigating the healthcare system is often as important as the care itself, and we provide both aspects to ensure the best outcomes. Our team considers each child's unique clinical situation, including factors such as tumor type, patient's age and molecular genetics, during our weekly Solid Tumor Board discussion to ensure the most effective treatment strategy for each patient. A critical aspect of this collaboration is also recognizing a patient's needs beyond clinical care. From logistical support like insurance authorizations, housing and transportation, to emotional and psychological support, we ensure families have everything they need to access the best care for their child.



Meet Abigail

As an active little girl, a healthy Abigail would run, jump and play. Perla, Abigail's mom, noticed a lump on her leg which had grown since she first noticed it. She knew something wasn't right and went to Valley Children's Emergency Department. Abigail's journey with Valley Children's began in May 2024 — three days before her seventh birthday — as she needed comprehensive testing to evaluate the mass in her thigh.

"I lost my mother to cancer, and when we noticed this mass on Abigail's knee, I refused to waste any time to get the necessary care that could save her life," shared Perla. "While she didn't 'look' visibly ill, I felt that something wasn't right. Maybe it was a mother's intuition? But I went directly to Valley Children's for answers. Screening alone felt scary, but I knew it was what my daughter needed."

Abigail received a series of imaging studies including an ultrasound, MRI and PET/CT. Her tissue biopsy and genetic testing confirmed the devastating news they had feared: Abigail was diagnosed with rhabdomyosarcoma in her left thigh.

"From the moment Abigail was diagnosed, our team started coordinating the resection of the primary tumor," shared Dr. Ruetima Titapiwatanakun (Dr. Ti to her patients), Valley Children's pediatric hematologist/oncologist. "Essential screening followed by swift action gave Abigail the best chance at recovery. Since surgery, she began systemic chemotherapy and radiation therapy to reduce the likelihood of tumor recurrence."

Abigail's journey hasn't just been about medical treatment; coordinated care has been vital in ensuring Abigail receives the logistical support needed to access that care.

"Our team of nurse navigators, case managers and social workers have facilitated insurance authorizations, referrals, scans and have even helped with housing and transportation to make sure that every step of her journey is as smooth as possible for Abigail and her family," shared Amanda Sanderson, Valley Children's nurse navigator. "We have monitored Abigail's progress at every turn, even when she needed off site care, and together, we have ensured optimal support and collaboration."

"Valley Children's has helped us throughout our treatment every step of the way and in even more ways than I could've imagined. The feeling I have knowing my daughter is in their care is what helps us through this," shared Perla.

"Today, Abigail's results look promising — recent scans show no evidence of disease," added Dr. Ti. "We are pleased with her treatment progress and will continue to monitor her closely."

"We understand that the emotional toll of a diagnosis like Abigail's can be immense, and that is why we are here — to provide an extended network of support to help families cope through the process with as much ease and peace of mind as possible," added Amanda.

The Fresno Truck Center Childhood Cancer Survivorship Program: Committed to Growth and Fostering Resilience

At Valley Children's, the focus on childhood cancer survivors is one of healing, growth and resilience. From scholarships that empower students, to the introduction of creative and healing projects, every effort is aimed at improving the lives of cancer survivors. Through community partnerships that help patients after care, The Fresno Truck Center Childhood Cancer Survivorship Program is deeply invested in the well-being and futures of childhood cancer survivors, ensuring that they have the support, resources and encouragement they need to thrive.

Recent accomplishments highlight the collective efforts of staff, families and community partners who – together – are determined to make a lasting impact on the lives of those who have faced childhood cancer so they feel supported and prepared to embrace the possibilities that lie ahead.

Scholarships for Survivors: Investing in Futures

Valley Children's awarded \$1,000 scholarships to 48 deserving individuals seeking higher education or specialized training. One of the most moving moments of the ceremony came from Emily Carpenter, a survivor who had been undergoing treatment during the previous year's event. This time, she returned healthier and stronger, sharing her story and inspiring others with her resilience.

"From the moment I first heard the words, 'you have cancer,' I became part of a family no one wants to be part of," Emily shared in her scholarship application. "Despite the negatives, these experiences have left a positive impact... as long as you open yourself to the good in bad situations, you will always find a reason to smile." Emily's words were a powerful reminder of the strength and hope that survivors carry with them as they continue to pursue their dreams.

Alistair Robertson, Valley Children's pediatric oncology social worker, expressed his gratitude to the donors who continually invest in the futures of childhood cancer survivors. "It was truly a team effort to coordinate such a special event to honor and celebrate our patients pursuing their academic or vocational endeavors."



Cultivating Life After Cancer: The Healing Power of Gardens

In an innovative approach to healing, the "Rooted in Resilience: Cultivating Life After Cancer" gardening project has taken root on the Madera campus of Valley Children's. Spearheaded by Matthew Mayes, Valley Children's oncology clinical research coordinator, the garden serves as a therapeutic space for patients, survivors and visitors. Inspired by the Madagascar periwinkle, a flower known for its cancer-fighting properties, the garden not only beautifies the hospital grounds but also symbolizes the healing process.

The project is a collaborative effort, with contributions from Valley Children's staff, the Master Gardeners of Fresno and Madera Counties and the Valley Children's President's Innovation Fund. The garden features a variety of plants, including tomatoes, blueberries and carrots, all chosen for their therapeutic properties. Additionally, Matthew Mayes led a research project to explore how gardening may positively impact the late effects of cancer treatments for survivors, further cementing the hospital's commitment to holistic care.

Rooted in Resilience: Survivorship Conference

The theme of resilience took center stage at the annual Survivorship Conference held at Valley Children's during Childhood Cancer Awareness Month. The conference, titled Rooted in Resilience, welcomed more than 160 survivors, families and supporters for a day of sharing stories, inspiration and growth. This event, held in partnership with The Leukemia Lymphoma Society (LLS), gave attendees the opportunity to engage with guest speakers who shared their experiences of overcoming challenges and thriving after cancer treatment.

A highlight of the day was the opportunity to explore the hospital's community garden, which serves as a peaceful and healing space for patients and visitors. Dr. John Gates, Valley Children's pediatric hematologist/oncologist and survivorship medical director, delivered a powerful video message, encouraging survivors to embrace resilience in the face of life's challenge and shared, "Resilience means that when you get challenges, you can adapt to the situation and bounce back."

A Partnership for Hope: Light the Night and Scholarships

In a powerful collaboration with The Leukemia & Lymphoma Society during their Light the Night event, Valley Children's helped make a significant difference in the lives of those affected by blood cancers. This annual event unites families, schools, corporate teams and sponsors to raise essential funds for research, advocacy and patient support. Among the inspiring moments was the presentation of a \$2,500 scholarship to Valley Children's patient Eden, highlighting the ongoing partnership between LLS and Valley Children's in supporting families touched by cancer.

Publications

Bhasin, N., Rush, G., Strouse, J. J., Moffatt-Bazile, K., Mohamed, R. E., Jacob, S. A., **Sathi, B. K.**, Smink, G. M., Schultz, C. L., DiVirgilio, N., Vichinsky, E. P., Velez, M. C., Hagar, R., Quarmyne, M., Ogu, U., & Treadwell, M. (2023). Role of menstrual bleeding assessments in sickle cell clinics in improving quality of care for women- a multicenter approach. *Blood*, 142(Supplement 1), 665. <https://doi.org/10.1182/blood-2023-174763>

Das, A., Fernandez, N. R., Levine, A., Bianchi, V., Stengs, L. K., Chung, J., Negm, L., Dimayacyac, J. R., Chang, Y., Nobre, L., Ercan, A. B., Sanchez-Ramirez, S., Sudhaman, S., Edwards, M., Larouche, V., **Samuel, D.**, Van Damme, A., Gass, D., Ziegler, D. S., . . . Tabori, U. (2023). Combined Immunotherapy Improves Outcome for Replication-Repair-Deficient (RRD) High-Grade Glioma Failing Anti-PD-1 Monotherapy: A Report from the International RRD Consortium. *Cancer Discovery*, 14(2), 258–273. <https://doi.org/10.1158/2159-8290.cd-23-0559>

Ercan, A. B., Aronson, M., Fernandez, N. R., Chang, Y., Levine, A., Liu, Z. A., Negm, L., Edwards, M., Bianchi, V., Stengs, L., Chung, J., Al-Battashi, A., Reschke, A., Lion, A., Ahmad, A., Lassaletta, A., Reddy, A. T., Al-Darraj, A. F., Shah, A. C., . . . **Samuel, D.** (2024). Clinical and biological landscape of constitutional mismatch-repair deficiency syndrome: an International Replication Repair Deficiency Consortium cohort study. *The Lancet Oncology*, 25(5), 668–682. [https://doi.org/10.1016/s1470-2045\(24\)00026-3](https://doi.org/10.1016/s1470-2045(24)00026-3)

Garza, N. J., Arulmozhi, K., LePhong, C., **Titapiwatanakun, R.**, & **Fernandez, K. S.** (2024). Diffuse large B-cell lymphoma of the ovaries presenting with a paraneoplastic sclerotic skin lesion. *Cureus*. <https://doi.org/10.7759/cureus.54974>

Gernez, Y., Narula, M., Cepika, A., Camacho, J. V., Hoyte, E. G., Mouradian, K., Glader, B., Singh, D., **Sathi, B.**, **Rao, L.**, Tolin, A. L., Weinberg, K. I., Lewis, D. B., Bacchetta, R., & Weinacht, K. G. (2024). Case report: Refractory Evans syndrome in two patients with spondyloenchondrodysplasia with immune dysregulation treated successfully with JAK1/JAK2 inhibition. *Frontiers in Immunology*, 14. <https://doi.org/10.3389/fimmu.2023.1328005>

Gernez, Y., **Sathi, B. K.**, Camacho, J. V., Rao, L., Glader, B., Singh, D., Hoyte, E., Lewis, D., Roncarolo, M. G., Chien, M., Bacchetta, R., & Weinacht, K. (2024). A multidisciplinary approach to unraveling genetic forms of immune dysregulation in children with refractory multilineage cytopenia. *Journal of Allergy and Clinical Immunology*, 153(2), AB186. <https://doi.org/10.1016/j.jaci.2023.11.601>

Kastellan, S., Kalb, R., Sajjad, B., McReynolds, L. J., Giri, N., **Samuel, D.**, Milde, T., Elbracht, M., Holzhauser, S., Niewisch, M. R., & Kratz, C. P. (2024). Germline biallelic BRCA2 pathogenic variants and medulloblastoma: an international cohort study. *Journal of Hematology & Oncology*, 17(1). <https://doi.org/10.1186/s13045-024-01547-4>

Keck, M., Tietze, A., Sievers, P., Bison, B., Avula, S., Brandner, S., Cheesman, E., Faure-Contier, C., Fenouil, T., Figarella-Branger, D., Gauchotte, G., Goebell, E., Gojo, J., Haberler, C., Hakumäki, J., Hayden, J. T., Jabado, N., Korhonen, L. S., Korshunov, A., . . . **Samuel, D.** (2024). Etmr-28. Evaluating therapeutic approaches in embryonal tumors with plagl1 and plagl2 amplification and unraveling molecular parallels in epigenetically related tumors with plag1-alterations. *Neuro-Oncology*, 26 (Supplement_4), 0. <https://doi.org/10.1093/neuonc/noae064.198>

Lanzkron, S., Manwani, D., Kanter, J., Sinha, A. A., Miller, R. E., Cronin, R., Jacob, S. A., Harper, J., Anderson, A. R., Treadwell, M., Owusu-Ansah, A. T., Fuh, B. R., Mandernach, M., Gollamudi, J., Saccente, S. L., Lilla, S. a. F., McNaull, M., LeBlanc, D. M., Saving, K. L., . . . **Sathi, B. K.** (2023). GRNDAD and Disease modifying Therapy (DMT): Shifts in DMT are seen at the Adolescent/Young Adult transition in sickle cell disease in a Multi-Site prospective registry. *Blood*, 142(Supplement 1), 798. <https://doi.org/10.1182/blood-2023-174930>

Leong, M., **Sathi, B. K.**, Davis, A., Hamid, S., Wu, S., **Woods, J.**, Kharbanda, S., Li, X., & Hou, J. (2023). Alpha-mannosidosis: a case with novel ultrastructural and light microscopy findings. *Journal of Pediatric Endocrinology and Metabolism*, 36(12), 1186–1190. <https://doi.org/10.1515/jpem-2023-0357>

Sathi, B. K., **Rao, L. B.**, Giannetta, T., Lopez, B., Saravia, S., **Carmichael, J.**, & **Balasa, V.** (2023). Prevalence of rare bleeding disorders in the Central California cohort: A Retrospective single institution analysis. *Blood*, 142(Supplement 1), 5488. <https://doi.org/10.1182/blood-2023-190315>

Tietze, A., Bison, B., Engelhardt, J., Fenouil, T., Figarella-Branger, D., Goebell, E., Hakumäki, J., Koscielniak, E., Ludlow, L. E., Meyronet, D., Nyman, P., Øra, I., Pesola, J., Rauramaa, T., Reddingius, R. E., **Samuel, D.**, Sexton-Oates, A., Vasiljevic, A., Wefers, A. K., . . . Von Hoff, K. (2024). CNS Embryonal Tumor with PLAGL Amplification, a New Tumor Type in Children and Adolescents: Insights from a Comprehensive MRI Analysis. *American Journal of Neuroradiology*, ajnr.A8496. <https://doi.org/10.3174/ajnr.a8496>

Vijayan, V., Macias, I., & **Fernandez, K. S.** (2023). A resident scholarship oversight committee to increase scholarly productivity. *Medical Education*. <https://doi.org/10.1111/medu.15203>





Abstracts

Carmichael, J., Saravia, S., Lopez, B., & **Balasa, V.** (2024, April). ATHN 10 - A single center experience. Poster presented at the Western States Regional Hemophilia Network, Fish Camp, CA.

Carmichael, J., Saravia, S., Lopez, B., & **Balasa, V.** (2023, October). ATHN 10 – A single center experience. Poster presented at the American Thrombosis and Hemostasis Network (ATHN) Data Summit, Atlanta, GA.

Carmichael, J., Saravia, S., Lopez, B., & **Balasa, V.** (2024, May). ATHN 10 - A single center experience. Poster presented at the Interprofessional Research Day Symposium, Valley Children's Hospital, Madera, CA.

Ghanbari, N., Desai, P., Grigsby, L., Lopez, A., Edwards, C., Mayes, M., Khalil, A., Martinez, M., & **Fernandez, K.** (2024, September). Robust training for optimal performance: A CRA's guide to effective onboarding through continued success. Presented at the Children's Oncology Group Fall Meeting, New Orleans, LA.

Lopez, A., Desai, P., Grigsby, L., Edwards, C., Ghanbari, N., Khalil, A., Mayes, M., & **Fernandez, K.** (2024, September). Optimizing patient communication and study compliance using EPIC tools. Poster presented at the Children's Oncology Group Fall Meeting, New Orleans, LA.

Mayes, M., Khalil, A., Farrell, C., **Titapitawanakun, R., Tcheng, W., & Fernandez, K.** (2024, May). A case of leptomenigeal sarcomatosis. Presented at the Interprofessional Research Day Symposium, Valley Children's Hospital, Madera, CA.

Mayes, M., Zohrabian, A., Ghanbari, N., Morris, Y., Desai, P., Edwards, C., Khalil, A., Lopez, A., Grigsby, L., **Fernandez, K., & Green-Murphy, A.** (2024, September). Roots of resilience: An interdisciplinary gardening initiative to address disparities in oncology clinical research. Presented at the Children's Oncology Group Fall Meeting, New Orleans, LA.

Sanghavi, R., Saunders, B., Gernez, Y., & **Sathi, B.** (2024). Pancytopenia in a 2-year-old female secondary to nuclear factor κ B subunit 1 (NF κ B1) mutation. Presented at the American Academy of Allergy, Asthma and Immunology, Boston, MA.

Sathi, B. K., Rao, L., Giannetta, T., Lopez, B., Saravia, S., **Carmichael, J., & Balasa, V.** (2023, December). Prevalence of rare bleeding disorders in the Central California cohort: A retrospective single institution analysis. Presented at the American Society of Hematology, Washington, DC.

Sathi, B. K., Rao, L., Giannetta, T., Lopez, B., Saravia, S., **Carmichael, J., & Balasa, V.** (2024, April). Evaluation and treatment of rare bleeding disorders in the Central California cohort. Poster presented at the Western States Regional Hemophilia Network, Fish Camp, CA.

Sathi, B. K., Rao, L., Giannetta, T., Lopez, B., Saravia, S., **Carmichael, J., & Balasa, V.** (2024, May). Prevalence of rare bleeding disorders in the Central California cohort: A retrospective single institution analysis. Presented at the Interprofessional Research Day Symposium, Valley Children's Hospital, Madera, CA.

Zohrabian, A., Ghanbari, N., Farrell, C., **Titapitawanakun, R., Tcheng, W., & Fernandez, K.** (2024, May). Osteosarcomatosis: A rare form of osteosarcoma. Presented at the Interprofessional Research Day Symposium, Valley Children's Hospital, Madera, CA.

Thank You to Our Donors

Valley Children's would like to thank the following individuals and organizations who generously gave more than \$1.5 million to the Valley Children's Cancer and Blood Disorders Center during FY24, which runs from October 1, 2023, through September 30, 2024. Lifetime giving is recognized on the donor wall at Valley Children's Hospital.

\$100,000 to \$249,000

Fresno Truck Center & The Howard Family
Isnardi Foundation
Kids Day 2024
Leon S. Peters Foundation

\$50,000 to \$99,999

Taco Bell Restaurants

\$25,000 to \$49,999

Anonymous (1)
Mrs. Sharon Evert
St. Baldrick's Foundation

\$10,000 to \$24,999

The James G. Boswell Foundation
Barrie & Una Boyett
Combined Benefits Administrators
Dr. Vonda Lee Crouse
DB Coffee Fresno, Inc.
Mr. Greg Hostettler
J.L. Marquez Properties, LLC
Mrs. Elaine McCain
Mid Valley Packaging & Supply
Nasim Rad Hope Foundation
Premier Valley Bank

Producers Dairy Foods, Inc.

Quiring General LLC

Sawtooth Ranch

Sensiba

In Memory of Robert Shapazian

Sigma Chi Fraternity-Epsilon Eta
Chapter CSU Fresno

Table Mountain Rancheria and Casino

Tachi Palace Hotel & Casino

Tarlton and Son, Inc.

Town & Country Contractors, Inc.

Trinity Fruit Company, Inc.

Nick & Liz Wagner

West Coast Carriers Foundation

\$5,000 to \$9,999

Automated Office Systems

Blue Cross of California

CSP, Corcoran

Ms. Margaret Corasick

Crinklaw Farm Services

Educational Employees Credit Union

Dr. Sharon Fritts and Mr. Robert Fritts

Mr. and Mrs. Gordon A. Osmus

Pacific Service Credit Union

R&R Truck and Trailer Repair

Relation Insurance Services

Ray & Mary Lou Steele

\$2,500 to \$4,999

Applied Process Cooling Corporation

Bee Sweet Citrus

Community West Bank

Cohen Communications

Enterprise Rent-A-Car

EYE-Q Vision Care

Fresno County Office of Education

Arthur J. Gallagher Risk Management
Services, LLC

Gustine Unified School District

Cathy Horstmann Huebert & Robert
Huebert

Kingsburg Cancer Volunteers

Kruger Construction Inc.

Pfizer Inc.

Philoptochos Society #4011

Price Paige & Company,
Certified Public Accountants

Mr. Steven Spencer

Westech Systems, Inc.

Wild Electric, Inc.

Yvonne & Bryan Wood

\$1,000 to \$2,499

Laura B. Andrews

Atwater Pentecost Association

Copper Hills Elementary School

Robert & Klytia Cozzi

FAST Federal Credit Union

Sarah M. Fletcher

GSF Properties Inc.

Nick & Mary Gullo

William & Cathy Haupt

JD Heiskell & Co

Hunter's Hope International Foundation

Mr. & Mrs. Raed M. Khoury

Richard & Sharon Lamb

Frank & Rebecca Loudenslager

Lucas & Michelle Quaccia

Alistair Robertson

San Joaquin Gardens

San Joaquin Valley College

Sanger High School FFA

Kimiko Sasaki Schock

Judith St Louis

Michele & Ted Waldron

***La Visionaria Guild - 2024 Cocktails for a Cause**

\$5,000

The Shapansky Family & Guss
Spencer Enterprises

\$3,000

All Hazard EHS, Inc.
Carl & Natalie Hinds
Cox Automotive/AutoTrader
PureFresh Sales
Quiring General LLC

\$1,250

The Almond Company
Joseph & Nina Gitti
Relation Insurance Services
SC Farms & Sons
Victoria's Care Home Retirement Homes
WM Lyles Co.



9300 Valley Children's Place
Madera, CA 93636-8762

RETURN SERVICE REQUESTED

NON-PROFIT ORG.
US POSTAGE
PAID
FRESNO, CA
PERMIT NO. 114



9300 Valley Children's Place, Madera, CA 93636

559-353-3000 • valleychildrens.org

Cancer and Blood Disorders Center
valleychildrens.org/cancer